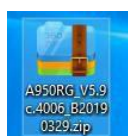


- 1、Unzip the file, correct upgrade file name is suffixed with “web”



- 2、Enter our web interface, **192.168.0.1**



- 3、Login, the username and password are **admin**

User Name

admin

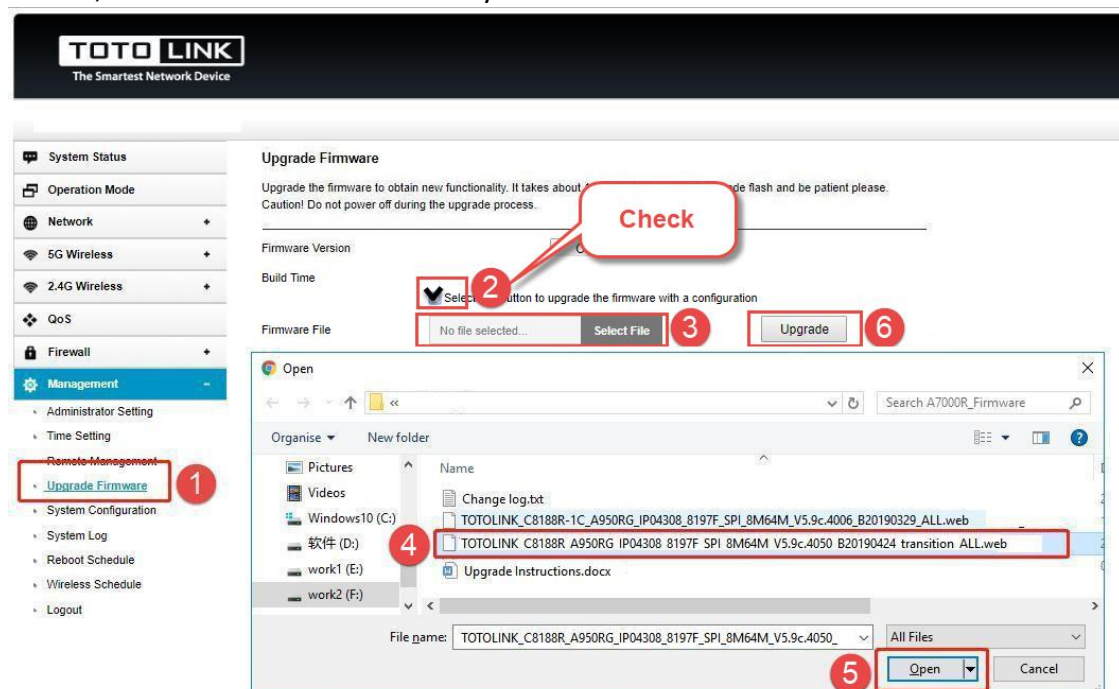
Password

.....

LOGIN

- 4、Upgrade transition version: **V5.9c.4050\_B20190424\_transition\_ALL**.

Management->upgrade firmware, check ②, click ③, pop up a Window, ④Please select the correct file, ⑤click "Open", ⑥finally click "Upgrade". Then wait a few minutes, then the router automatically restarts.

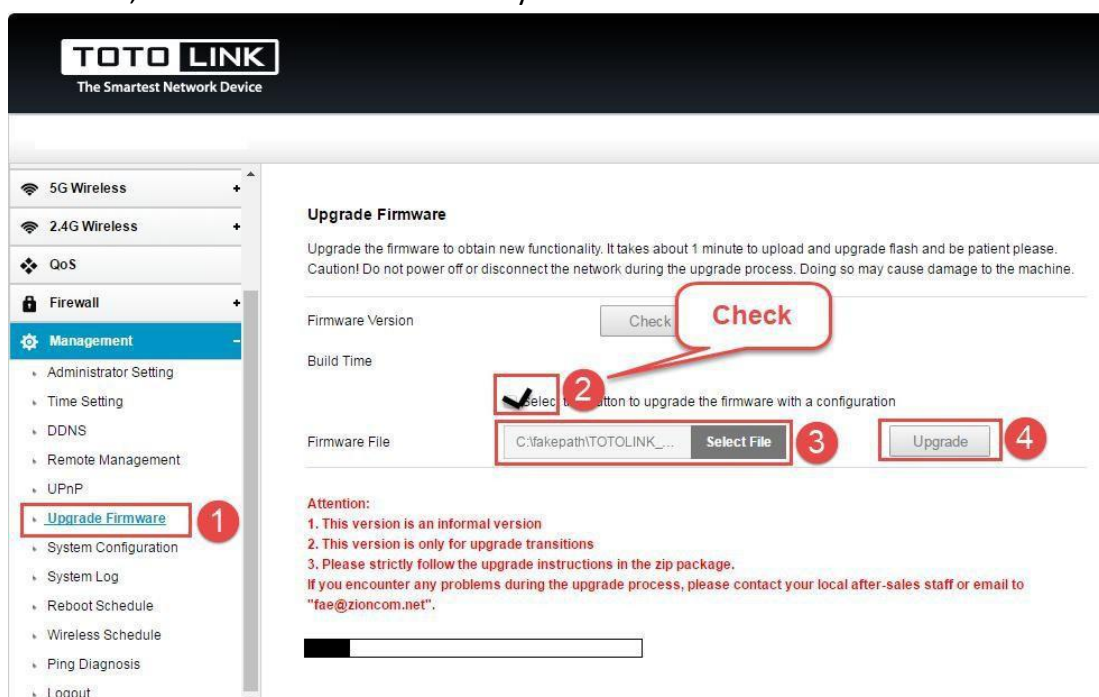


[ Notice ]

**DO NOT power off the device or close the browser window during the upload because it may crash the system.**

- 5、Upgrade stable version: **V5.9c.4006\_B20190329\_ALL.web**

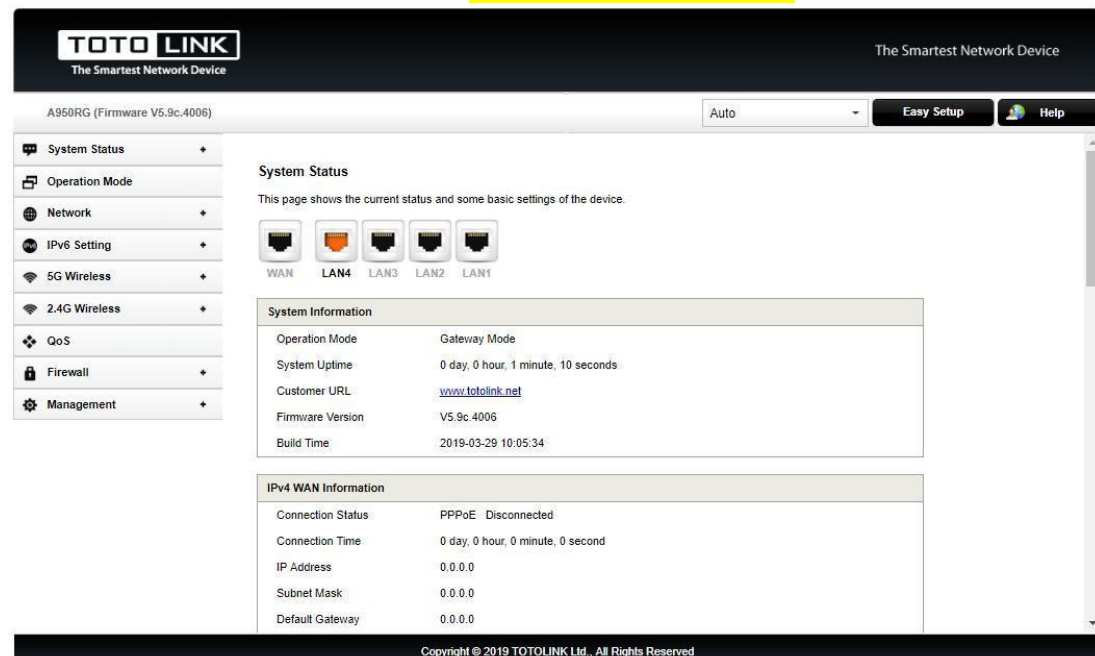
Log in to the new router page and upgrade the firmware again. Then wait a few minutes, then the router automatically restarts.



[ Notice ]

**DO NOT power off the device or close the browser window during the upload because it may crash the system.**

- 6、After the upgrade is successful, **must be reset the router**.



[Attention]

1. V5.9c.4050\_B20190424\_transition\_ALL is an informal version, only for upgrade transitions.

2. Please strictly follow the upgrade instructions in the zip package.

If you encounter any problems during the upgrade process, please contact your local after-sales staff or email to **"fae@zioncom.net"**.

## FAQ Common problem

After the upgrade is successful, you cannot log in to the router page, which may be related to factors such as routers and browsers. Please reset the router and clean up the browser cache.

### 1. Reset router:

Please make sure your router's power is on regularly, then press the RST button for about 5~8s. Loosen the button until your router's LED lights all flashing, then you have reset your router to default settings.



### 2. Clear your browser cache:

Delete cookies on the web browser. Here we take Google Chrome for example.

**Note: In general, the browser enters the management address of the router and the page display is incomplete. Please use this method first.**

